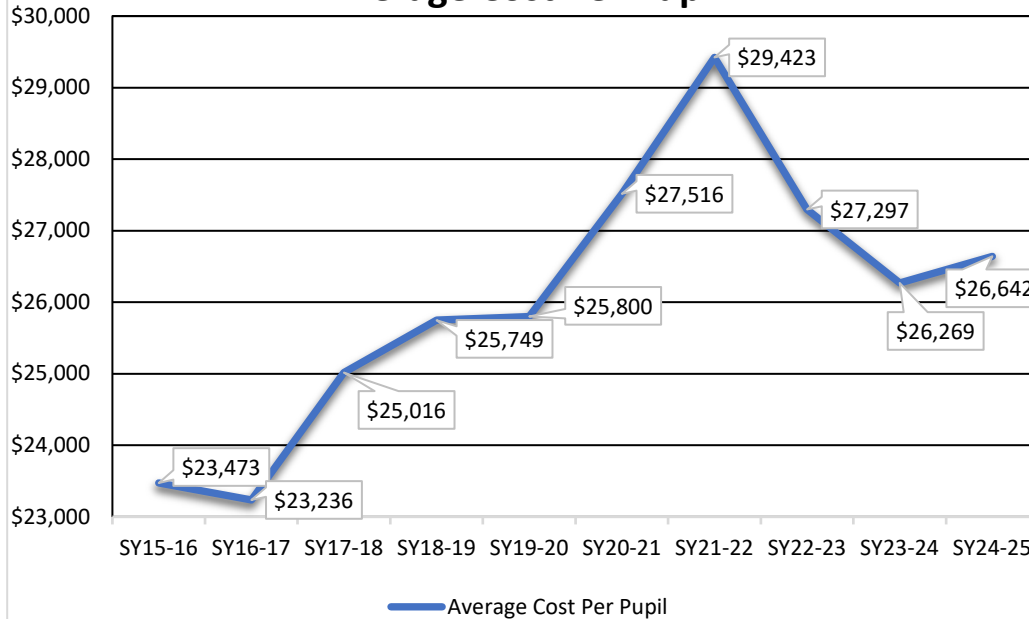


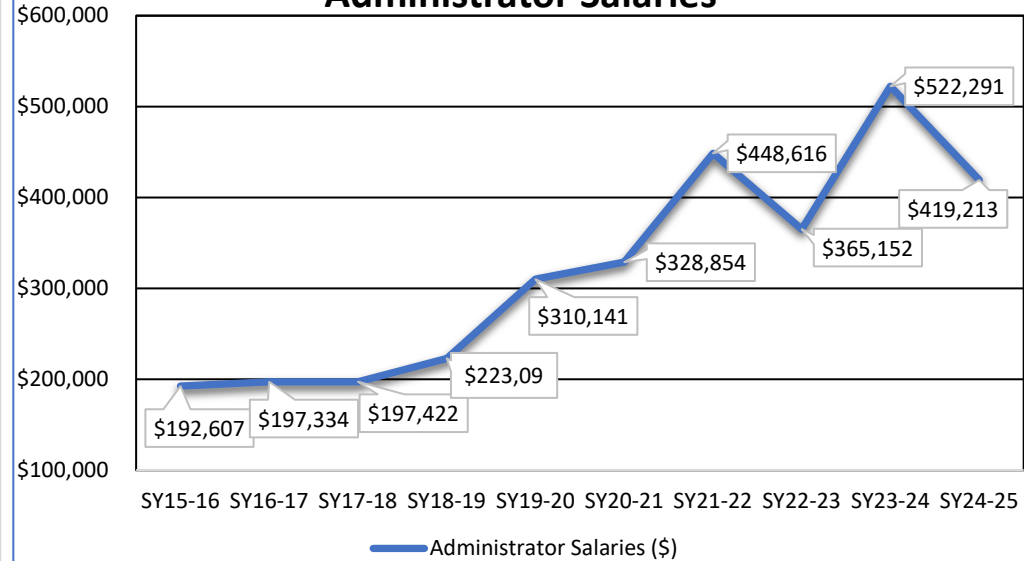
# Mandatory Report to Voters On School District Expenses

## SAU 39-Souhegan Cooperative School District

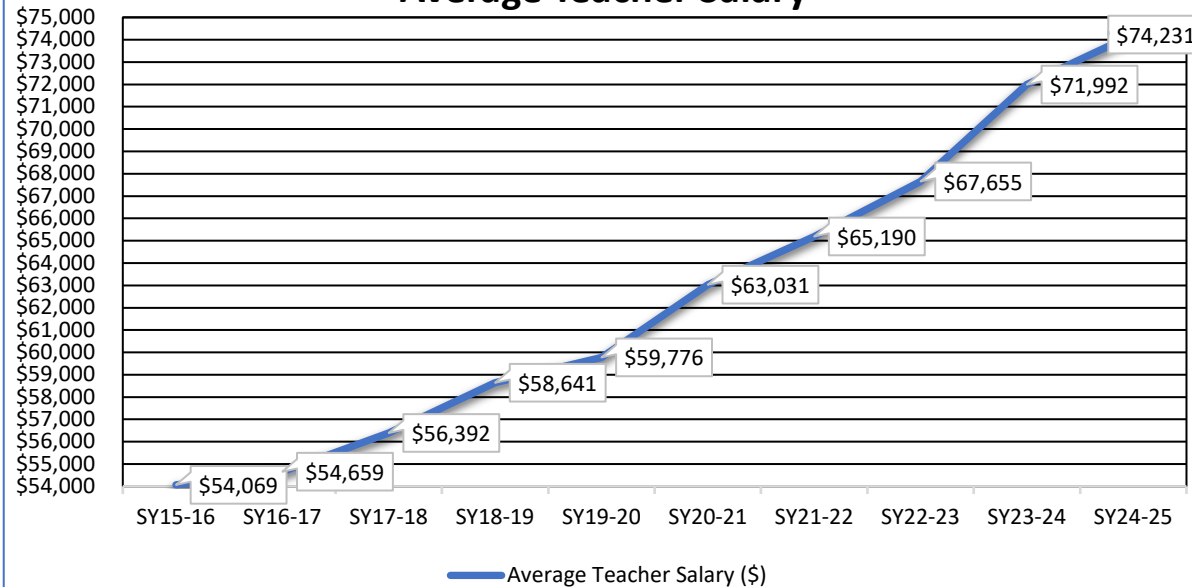
### Average Cost Per Pupil



### Administrator Salaries



### Average Teacher Salary



### Top Administrator Salaries

<b>Superintendent</b>	<b>\$172,268</b>
<b>Asst. Superintendent</b>	<b>\$140,000</b>
<b>Business Administrator</b>	<b>\$131,684</b>

### Top Administrator Salaries (SY26) - Apportionment to School Districts

Administrator	Amherst	Souhegan	Mont Vernon	Total
Superintendent	\$100,863	\$53,575	\$17,830	\$172,268
Asst. Superintendent	\$81,970	\$43,540	\$14,490	\$140,000
Business Administrator	\$77,101	\$40,954	\$13,629	\$131,684

### Top Administrator Salaries (Sum) - Apportionment to School Districts

Year	Amherst	Souhegan	Mont Vernon	Total
SY16	\$106,704	\$69,724	\$16,179	\$192,607
SY17	\$106,955	\$73,605	\$16,773	\$197,334
SY18	\$106,213	\$74,625	\$16,583	\$197,422
SY19	\$121,811	\$83,439	\$17,848	\$223,098
SY20	\$174,548	\$110,938	\$24,656	\$310,141
SY21	\$190,439	\$110,857	\$27,558	\$328,854
SY22	\$260,422	\$148,716	\$39,478	\$448,616
SY23	\$210,839	\$120,610	\$33,704	\$365,152
SY24	\$302,406	\$168,178	\$51,707	\$522,291
SY25	\$246,078	\$129,118	\$44,017	\$419,213